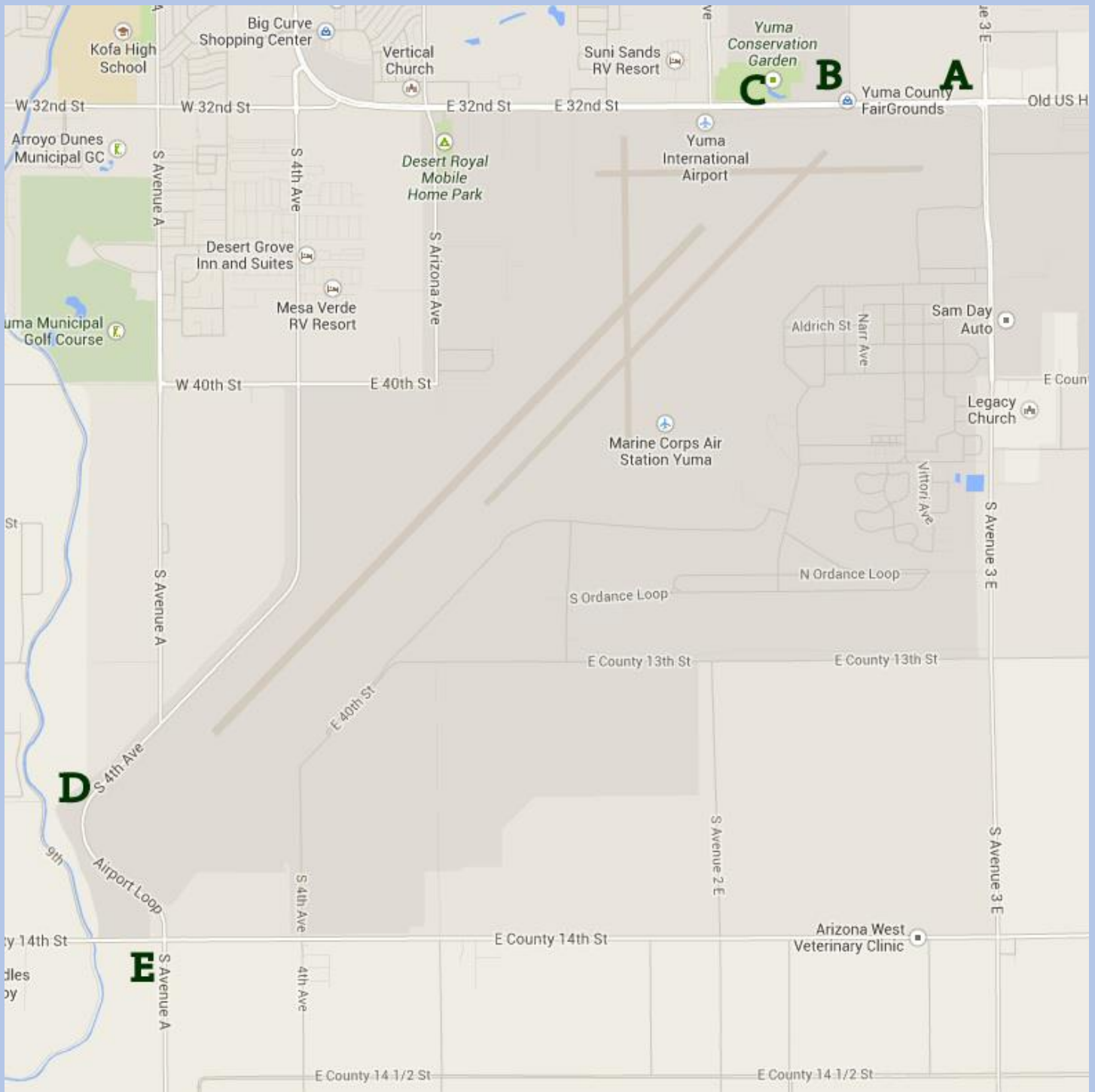


Marine Corps Air Station Yuma

Aircraft Observation Guide



Avenue 3E & 32nd (Location A) [GPS 32.669837, -114.584667] – This is a great spot in the AM to shoot arrivals on runway 21 and departures on runway 03. Take 32nd St. west off of Avenue 3E. Immediately begin to look for an area where the curb is recessed to pull in on the north (right) side. Depending on runway use, you will have to move east/west at this location to catch the traffic on the various runways. Also, keep an ear/eye out for AM Helo departures at this location.

The Fairgrounds (Location B) [GPS 32.669974, -114.592156] – This is a great location for Afternoon to late afternoon arrivals on runway 21 and departures on runway 03. Take 32nd St until the entrance to the Fairground’s parking lot. Like “Location A”, you will have to move west/east in the parking lot depending on whether the arrivals/departures are going to the left or right runway. ***Note*** The Fairground’s parking lot typically closes at 3-4pm. When this happens, you can move to one of the inlets in front of the gate to the Fairgrounds.

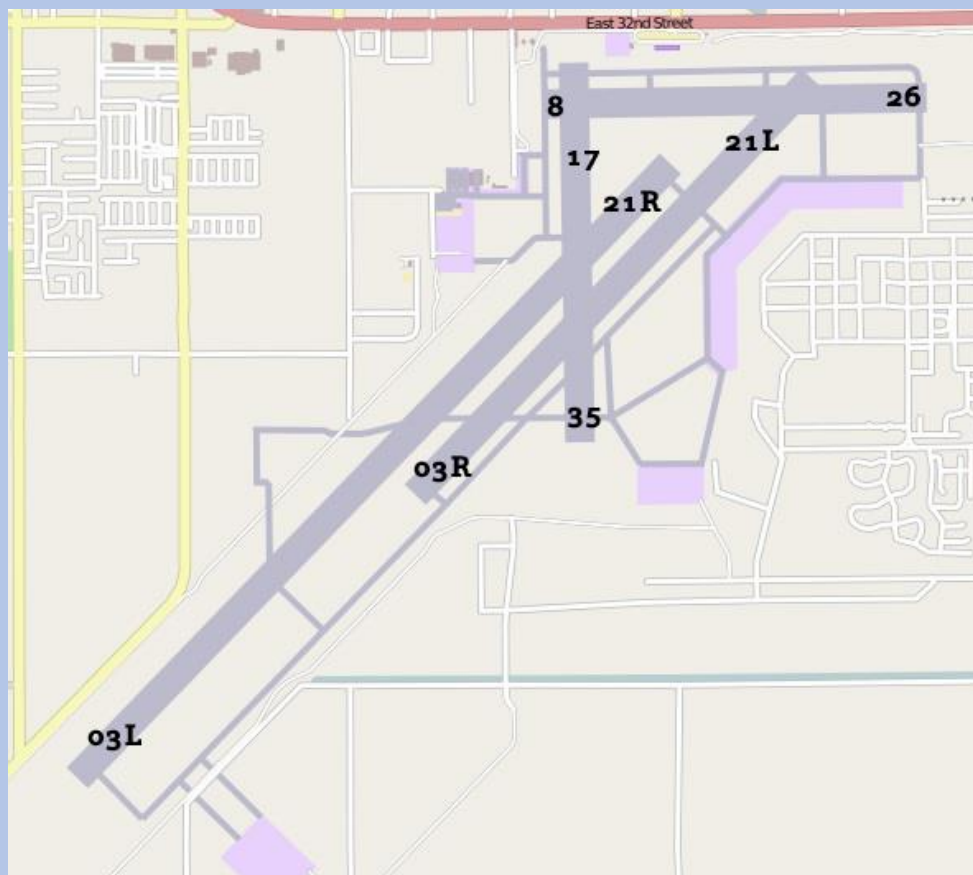
The Conservation Garden (Location C) [GPS 32.669698, -114.594312] – If afternoon traffic is heavy on 21R/03L, you may want to shoot from this location for a better viewing angle. This location is just west of the fairgrounds. You can park your vehicle on the dirt area between 32nd St. and the Conservation Garden. The only way to access this dirt area is off of Pacific Ave. Head north on Pacific until the first driveway on the right. Take the dirt path back to the Conservation Garden location.

The Sand Dunes (Location D) – [GPS 32.633226, -114.637652] – This location is great for late-afternoon arrivals on 03L. For arrivals on 03R, a lens with a focal length of 400mm+ is required. The location is accessed by heading south on 4th Ave./Airport Loop. There is a dirt area in front of the dunes where you can park. Take the short trail around the back to get on top of the dunes. This will provide an almost eye-level view of the arrivals.

4th Ave. & 14th St. (Location E) – [GPS 32.625644, -114.633070] – This location can be good for morning arrivals on 30 and departures on 21. It is located on the SW corner of 4th Ave./S Ave. A & E County 14th St.

****It is recommended that a scanner radio be used to monitor the traffic in and out of the base****

Runway Configuration



Scanner Frequencies

Frequency	Alpha Tag	Description
336.4000	MCAS CD	MCAS Yuma Clearance & Delivery
118.0000	MCAS CD	MCAS Yuma Clearance & Delivery
361.2000	MCAS TWR	MCAS Yuma Tower
119.3000	MCAS TWR	MCAS Yuma Tower
374.8000	MCAS DEP	MCAS Yuma Departure
125.5500	MCAS DEP	MCAS Yuma Departure
336.4000	MCAS APP	MCAS Yuma Approach
374.8000	MCAS APP	MCAS Yuma Approach
124.7000	MCAS APP	MCAS Yuma Approach
377.9000	MCAS CMD	MCAS Yuma Command
273.2000	MCAS ATIS	MCAS Yuma ATIS
118.8000	MCAS ATIS	MCAS Yuma ATIS

Disclaimer

*** The creator and/or distributor of this document makes no claim as to the legality of observing and/or photographing aircraft at the locations specified in this document. It is expected that private property is off-limits, as well as, any locations designated as such (ex- no parking/standing zones). At times, observing/photographing aircraft can be a sensitive security issue. In any case, one should always be prepared to be confronted by law enforcement/airport or base security and be respectful at all times. While one can argue on whether aircraft observation at airports and military installations is a right or privilege, during these security-sensitive times in the U.S., I prefer to look at it as a privilege and act accordingly.***